



SOUNDWAVE®
SCRUNCH
Acoustic Panel
By Teppo Asikainen

PRODUCT INFORMATION

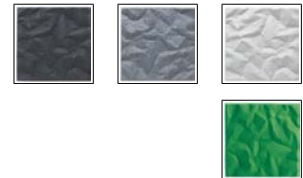
Soundwave® Scrunch is designed by Teppo Asikainen. The inspiration for the pattern of Scrunch comes from a creased paper.

Sound and acoustics are two of the most important and most overlooked factors when it comes to creating the right atmosphere for interaction in areas where people communicate and socialize. The combination of form and function in Soundwave® does not only give the panels a great appearance, but also serves the function of absorbing and reflecting sound.

TECHNICAL INFORMATION

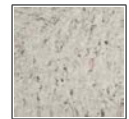
Scrunch is a lightweight sound absorber in the upper frequency range (500 Hz and above). These panels help reduce disturbing reflections of environmental noise such as voices, telephones etc. Material: recyclable moulded polyester fibre. Colours: Anthracite, grey, and offwhite, alt. upholstered in Europost. Scrunch is Eco labeled with the Nordic Swan.

ENVIRONMENTAL LABELING



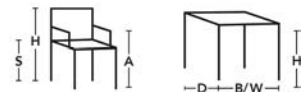
ACCESSORIES

Seperate filling made of recycled textile and PET. Basfill is being placed inside the Soundwave panels in order to improve sound absorption in the lower frequency range (150-500 Hz). Basfill is available as accessories to all panels except for Luna and Pix.



BASFILL

SOUNDWAVE® SCRUNCH



H 585, W 585, D 60



This product is available in an eco-labeled performance, certified by the Nordic Ecolabel and/or Möbelfakta. By choosing this product you make a difference towards a better environment.