

SOUNDWAVE®GEO
Acoustic Panel
By Ineke Hans

FACTS

OFFECCT

PRODUCT INFORMATION

Soundwave® Geo is designed by the well-known furniture designer Ineke Hans. Ineke Hans views Soundwave® Geo as a three-dimensional wall decoration similar to the ones which people have always created around the world. The difference is that Geo has a clear function due to its sound-absorbing purpose.

"People have always wanted to decorate their walls – everywhere and in every era. But we designers have a tendency to pare away the decorative aspect. I wanted to combine Offecct's sound panels made of felt with a geometric pattern that is decorative but can also function on the large scale with many panels in rows without looking too cluttered. Quite simply, a combination of tradition and modern design," says Ineke Hans.

TECHNICAL INFORMATION

Geo is designed to be used as lightweight sound absorbers in the upper frequency range (500 Hz and above). These panels help reduce disturbing reflections of environmental sounds such as voices, telephones etc. Recyclable moulded polyester fibre in anthracite, grey and offwhite.

ACCESSORIES

Separate filling made of recycled textile and PET. Basfill is being placed inside the Soundwave panels in order to improve sound absorption in the lower frequency range (150-500 Hz). Basfill is available as accessories to all panels except for Luna and Pix.

ENVIRONMENTAL LABELING



AWARDS



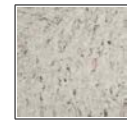
2010



ANTHRACITE GREY

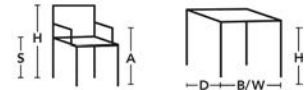


OFFWHITE



BASFILL

SOUNDWAVE®GEO



H 585, W 585, D 60



This product is available in an eco-labeled performance, certified by the Nordic Ecolabel and/or Möbelfakta. By choosing this product you make a difference towards a better environment.