

SOUNDWAVE®
BOTANIC
Acoustic Panel
By Mario Ruiz

FACTS

OFFECCT

PRODUCT INFORMATION

Soundwave® Botanic is designed by Spanish Mario Ruiz.

"I appreciate how the forest is everywhere in Scandinavia. The forest's presence is so significant, that when I was commissioned to design a sound absorber that would be part of the Soundwave® project, I was inspired by tree branches. And this is what lies behind the final form: abstract and structural movements inspired by the natural vegetation", says Mario Ruiz.

"I am very pleased with the final result, and how these structures change depending on whether the panels are placed vertically or horizontally", continues Mario Ruiz.

TECHNICAL INFORMATION

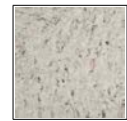
Botanic is designed to be used as lightweight sound absorbers in the upper frequency range (500 Hz and above). These panels help reduce disturbing reflections of environmental sounds such as voices, telephones etc. Recyclable moulded polyester fibre in anthracite, grey, green and offwhite, alt. upholstered in Europost.

ENVIRONMENTAL LABELING



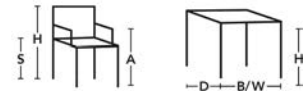
ACCESSORIES

Separate filling made of recycled textile and PET. Basfill is being placed inside the Soundwave panels in order to improve sound absorption in the lower frequency range (150-500 Hz). Basfill is available as accessories to all panels except for Luna and Pix.

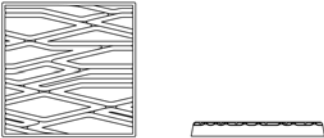


BASFILL

SOUNDWAVE® BOTANIC



H 585, W 585, D 62



This product is available in an eco-labeled performance, certified by the Nordic Ecolabel and/or Möbelfakta. By choosing this product you make a difference towards a better environment.