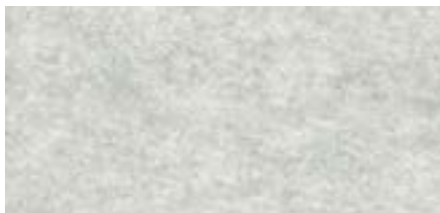


# COLOUR

palette for HeartFelt®

# HeartFelt®

## Shades of grey



**WHITE 7593**



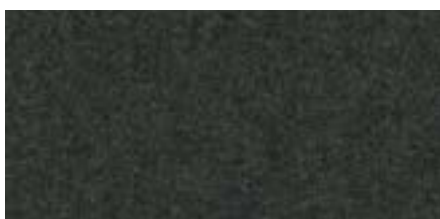
**LIGHT GREY 7596**



**MIDDLE GREY 7597**



**DARK GREY 7598**



**BLACK 7594**

## PES fibres

HeartFelt® is a linear ceiling system with open joints made of non-woven thermoformed PES fibres.

## Wall application

We recommend using only the 55 mm box-shaped (40HL55), 64 mm rounded (40HR64) and Groove (60HG50) panels for a wall application.

*Colours may vary from the original*



HeartFelt® is available in 5 grey shades, ranging from white to black and in 5 earth tones. The proportion of the coloured and white PES fibers determines the colour of the panels. Therefore colours may differ from presented samples.

# Earth tones



**CREME 7575**



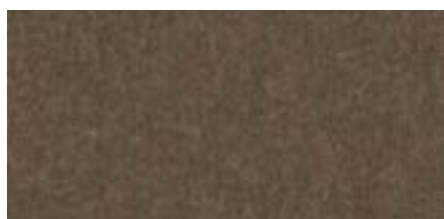
**LIGHT BROWN 7576**



**MEDIUM BROWN 7577**



**DARK BROWN 7578**



**UMBER 7579**

## More information

Would you like to know more about Hunter Douglas' services?  
Visit our website: [www.hunterdouglasarchitectural.eu](http://www.hunterdouglasarchitectural.eu)



ASIA | AUSTRALIA | LATIN AMERICA | NORTH AMERICA

Austria

Belgium

Bulgaria

Croatia / Slovenia

Czech Republic

Denmark

Finland

France

Germany

Greece

Hungary

Israel

Italy

The Netherlands

Norway

Poland

Portugal

Romania

Serbia

Slovakia

Spain

Sweden

Switzerland

Turkey

United Kingdom

South Africa

Middle East

**CEILING**S



**WALLS**



**SUN LOUVRE**



**FAÇADES**



More information

Would you like to know more about  
Hunter Douglas' services?

Visit our website:

[www.hunterdouglasarchitectural.eu](http://www.hunterdouglasarchitectural.eu)