

**BAUX Acoustic X-FELT**  
**Material Safety Data Sheet**



**Handling Usage Recycling and Contact**  
**Products and Dimensions**  
**Colours**  
**Digital Toolkit**  
**Material Composition**  
**Certificates and Standards**  
**Acoustic Performance**  
**Physical Appearance and Performance**  
**Specification Guide**  
**Specification Codes**

# Read this

## Benefits of BAUX Acoustic X-FELT

BAUX Acoustic X-FELT delivers exceptional fire safety without the use of any fire treatment additives, preserving the product's sustainable integrity. By carefully selecting ultra-fine-, high-quality polyester fibres and precisely composing and processing the fibre mix, we have eliminated the key fire components: access to oxygen and fuel. This innovative approach ensures both superior fire safety and a commitment to environmental sustainability. BAUX Acoustic X-FELT patterns are carefully designed by Form Us With Love.

## Unpacking and handling

Please handle BAUX products with care during unpacking, storage, and installation. Inspect all materials carefully upon delivery, noting any damages or quality issues on the delivery receipt, and notify BAUX immediately. Claims cannot be accepted after the panels have been installed. Carry boxes and panels upright to prevent bending, and store them flat in a cool, dry place away from humid areas. Ensure the storage temperature does not exceed 65°C (150°F). Take particular care to protect the edges of the panels to maintain their quality.

## Installation

BAUX Acoustic X-FELT Panels and Tiles are simple to install. They can be fixed directly using a commercial adhesive and it is the installer's responsibility to ensure the adhesive is suitable for the product and the wall surface. BAUX Acoustic X-FELT Tiles are also designed for easy integration into standard suspended ceiling T-grids, fitting both 600x600 mm and 2.0x2.0 ft grids. X-FELT Panels and Tiles provide versatile acoustic solutions, meeting Class A to D requirements and achieving NRC values up to 0.90.

## Adapt the panels

BAUX Acoustic X-FELT Panels and Tiles are easy to cut. Use a sharp blade, a straight edge for guidance, and cut gradually at a 90° angle. Read the installation instructions for details.

## Use and maintenance

BAUX products require minimal maintenance, but for routine cleaning, simply use a vacuum to remove dust, particulate matter, and airborne debris. Alternatively, wipe the surface with a damp cloth using a mild solution of liquid detergent and warm water. After rinsing with clean water, pat dry with a lint-free cloth. For difficult-to-reach areas or larger assemblies, compressed air works effectively to remove dust. For tougher stains, a diluted solution of household bleach can be used, followed by a thorough rinse with clean water. Always test in an inconspicuous area first.

## Reuse, recycling and deposition

X-FELT panels and Tiles that have been disassembled in connection with renovation or demolition may be reused or take use of the BAUX Circle program where we make it easy to reuse or recycle every single acoustic product, down to the smallest part.

## Tolerances

The BAUX Acoustic X-FELT production process is highly precise, though small variations may occur. The tolerance levels are ±1mm for length, width, and thickness.

## Contact

If you are interested in BAUX acoustic products, please get in touch. We ship globally through our headquarters and via local partners and representatives.

For more information, visit [baux.com](https://baux.com) or contact us at [info@baux.com](mailto:info@baux.com)

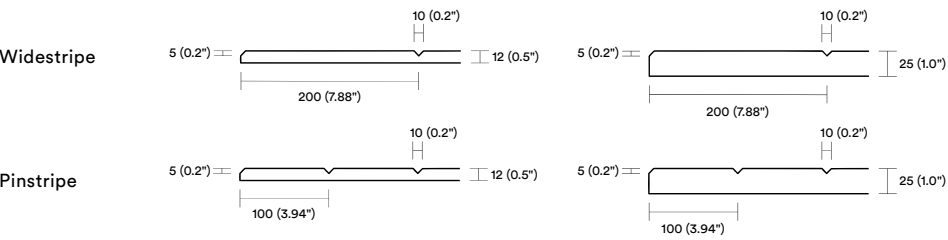
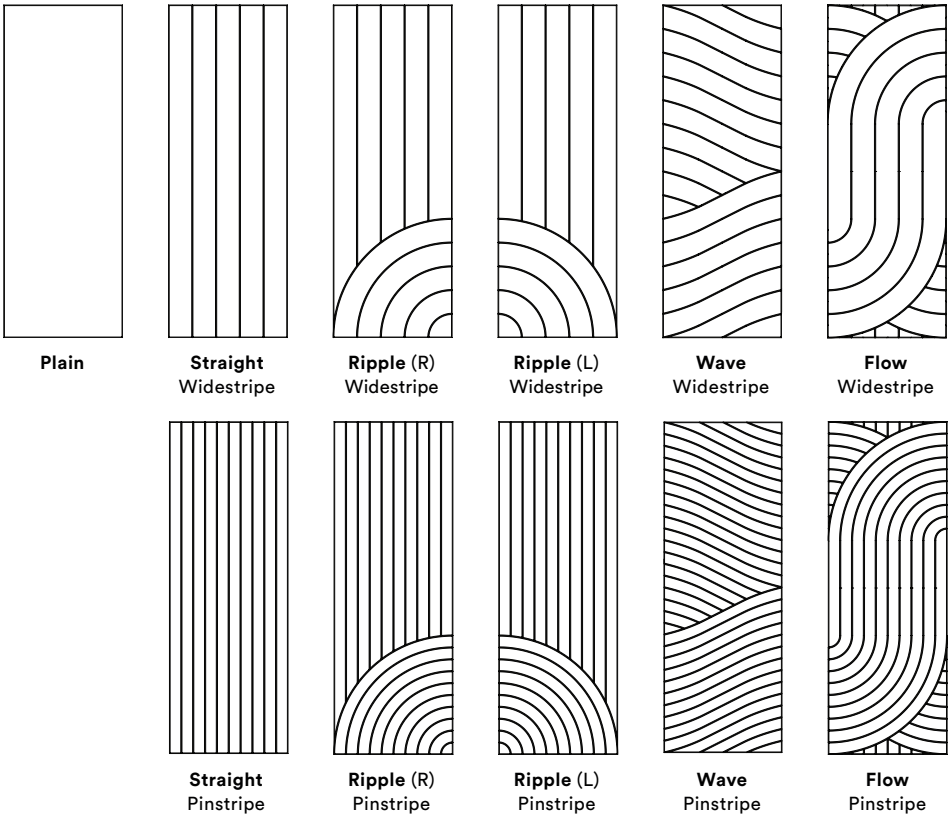
BAUX HQ - Stockholm, Sweden

[baux.com/contact](https://baux.com/contact), 0046 (8) 21 07 07, [info@baux.com](mailto:info@baux.com)

# Panels

BAUX Acoustic X-FELT Panels offer an ideal solution for covering large wall surfaces, combining practicality with style. Designed for any space that demand noise control over small and large areas. Their lightweight yet durable construction ensures easy installation, and their large format makes them especially suited for covering expansive areas with ease.

### Products:



Measures in millimeters and inches. Perimeter bevel and surface pattern cuts are 45 degrees.

**Dimensions:** BAUX X-FELT Panels are available in one size, 2800×1000 mm (equals about 39.4 × 110.2") and two different thicknesses, 12 mm and 25 mm (0.5" and 1.0").

Product	Width (mm & inch)	Height (mm & inch)	Thickness (mm & inch)
Panel 12 mm	1000 mm, 39.4"	2800 mm, 110.2"	12 mm, 0.5"
Panel 25 mm*	1000 mm, 39.4"	2800 mm, 110.2"	25 mm, 1.0"

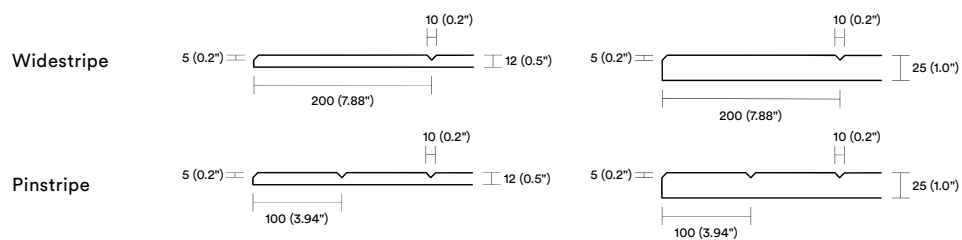
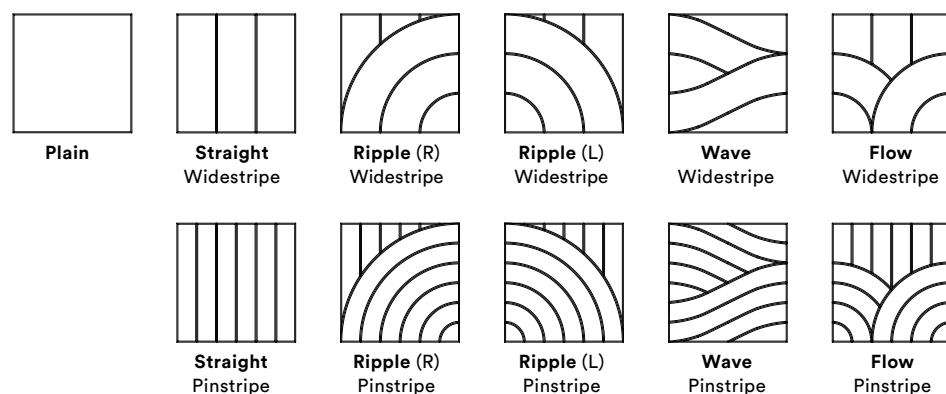
\* Panels with 25mm / 1.0" thickness are subject to a MOQ of ~250 square meters per colour (~2 500 sqft).

**Batch size:** X-FELT Panels are delivered in multiples of 2 pieces per pattern and colour.

# Tiles

BAUX Acoustic X-FELT Tiles are designed for versatile installation in ceilings, while also offering the flexibility to be used on walls. These tiles allow for the creation of striking patterns, providing a high degree of design freedom to enhance any space. The texture and colour options enable seamless integration with X-FELT Wall Panels, allowing for cohesive design elements throughout a room. X-FELT Tiles deliver not only aesthetic appeal but also effective sound absorption, making them ideal for any environment.

## Products:



Measures in millimeters and inches. Perimeter bevel and surface pattern cuts are 45 degrees.

## Dimensions:

BAUX X-FELT Tiles are designed to fit into various ceiling T-grids or mounting directly onto ceilings and walls. Choose the appropriate tile type to suit your installation needs.

Type of install	Thickness (mm & inch)	Code	Edge	Width (mm & inch)	Height (mm & inch)
Suspended Ceiling Exposed Lay-In Grid	12 mm	ES4s.EU-t12	Square	593 mm	593 mm
	25 mm*	ES4s.EU-t25	Square	593 mm	593 mm
	0.5"	ES4s.US-t12	Square	23.8"	23.8"
	1.0"*	ES4s.US-t25	Square	23.8"	23.8"
Wall or Ceiling with Glue	12 mm	CB4s.EU-t12	45° bevel	600 mm	600 mm
	25 mm*	CB4s.EU-t25	45° bevel	600 mm	600 mm
	0.5"	CB4s.US-t12	45° bevel	24"	24"
	1.0"*	CB4s.US-t25	45° bevel	24"	24"

\* Tiles with 25mm/1.0" thickness are subject to a MOQ of ~250 square meters per colour (~2 500 sqft).

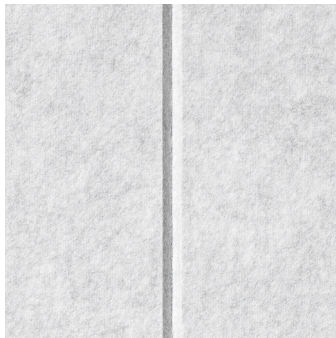
## Batch size:

X-FELT Tiles ES4s.EU-t12 and ES4s.EU-t25 (dim 593×593 mm) are delivered in multiples of 15 pieces per pattern and colour. All other X-FELT Tiles are delivered in multiples of 12 pieces per pattern and colour.

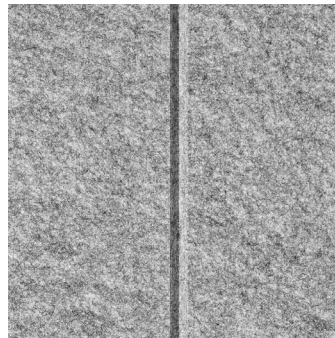


# Colours

Nine stunning colours to elevate your design possibilities. Producing X-FELT typically creates a slightly marbled look, blending multiple shades. Small colour variations are normal when working with this sustainable material.



Mono Chalk Grey



Mono Granite Grey



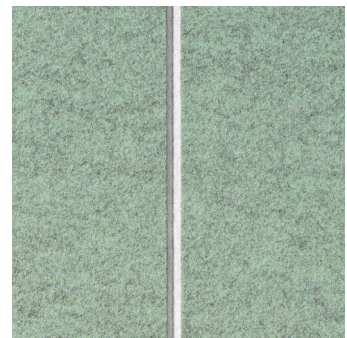
Mono Ash Black



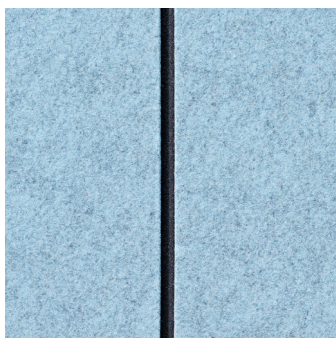
Duo Sand and Grey



Duo Brown Sand and Black



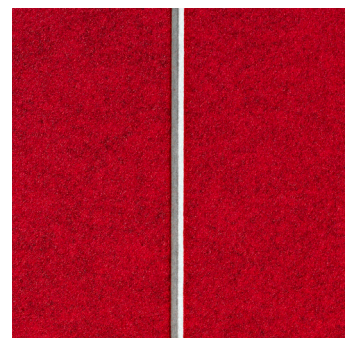
Duo Grass and Grey



Duo Sky Blue and Black



Duo Deep Waters and Grey



Duo Red Clay and Grey

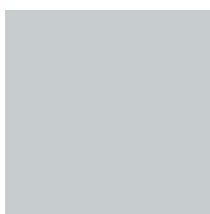
Custom Colours are not available.

# Ceiling Grids in matching colours

For an elegant and cohesive look, the ceiling grid can be ordered or painted in matching shades to complement the ceiling panels. This allows for a seamless and harmonious design, enhancing the overall aesthetic of the space.



## Grid Colours



Chalk Grey



Granite Grey



Ash Black



Sand



Brown Sand



Grass



Sky Blue



Deep Waters



Clay Red

If you consider painting the grid, please contact BAUX for paint colour codes.

# BAUX Digital Toolkit

## About:

BAUX Digital Toolkit is a free resource packed with downloadable files that help working professionals design, sketch and construct sustainable, beautiful and acoustically pleasing environments for spaces of every size.

Download the full Architecture toolbox or specific files at [baux.com](http://baux.com)



### 3D/CAD

For many professionals, computer-aided design is an indispensable tool when it comes to visualising designs for upcoming projects. All of our X-FELT product files are available in formats compatible with AutoCAD, Sketchup, ArchiCAD, Rhino and more.

.3ds .dwg .dxf .igs .skp  
.sldprt .step



### BIM/Revit

Building information modelling is an essential tool used by professionals for virtual construction during the project planning process. All of our X-FELT product files are available in compatible formats, including detailed elements featuring BAUX colour schemes.

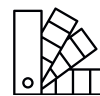
.rfa



### Keynote and Powerpoint

If you need help getting the ideation process rolling, our ready-to-go presentation is an excellent catalyst. Available in both Keynote and Powerpoint formats, it features “drag & drop” objects so you can start designing right away. Great for workshops and client meetings.

.key .pptx



### BAUX Patterns

BAUX Patterns makes it easier than ever to transform any space with a unique X-FELT design. Select from over 500 pre-measured 3D patterns, each designed to repeat like wallpaper so you can quickly calculate exactly how many tiles you'll need for your project.

.png .tiff .jpg .dwg .txt



### Adobe Illustrator

An easy and efficient design tool, a lot of professionals choose Adobe Illustrator to help bring their creative visions to life. All of our X-FELT product files are ready to go in compatible formats for easy upload so you can start playing with shapes, colours and patterns.

.ai



### Adobe Photoshop

A popular tool for editing photos and graphics. Adobe Photoshop can help you perfect your presentation and exhibit your design at its fullest potential. To make things easier, we supply high-resolution pictures of all X-FELT products in vectorised PDF format.

.psd



### Texture Files

The next best thing to experiencing it in person. Texture files give you an idea of what a material will bring to a space in terms of colour and feel. All of our X-FELT product files are available in texture file formats. Great for renderings or as colour samples.

.ai




### Mounting DWG

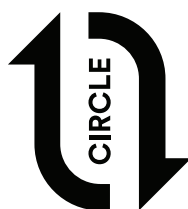
When it's time to build, we have the information you'll need to translate your designs from drawings to real life. We provide mounting files in DWG format, which can be attached to drawings, as well as installation instructions for the entire BAUX X-FELT range.

.dwg

# Material Composition

<b>About</b>	<p><b>BAUX Acoustic X-FELT Panels and Tiles</b> are available in two compositions, depending on your choice of colours. The <b>Mono Colour Panels and Tiles</b> consist of a single core material in one of three shades: Chalk Grey, Granite Grey or Ash Black. The <b>Duo Colour Panels and Tiles</b> combine two materials: a core material in either Chalk Grey or Ash Black, paired with a top material available in six colours—Sand, Brown Sand, Grass, Sky Blue, Deep Waters or Red Clay.</p>
<b>Composition of Ingredients</b>	<p><b>Core Material and Top Material</b> (all colours)</p> <p>100 % polyester whereoff 15 % Post Consumer Recycled content CAS: 113669-97-9 Free from chemical binders and fire treatment additives such as minerals or phosphates</p> <p>Oeko – Tex Standard 100, Class I GRS Certified source of recycled PET Source: Recycling entities across Europe</p> <div><p>The GRS is an international, voluntary, full product standard that sets out requirements for third-party certification of recycled content, chain of custody, social and environmental practices, and chemical restrictions. The goal of the GRS is to increase the use of recycled materials in products and reduce/eliminate the harm caused by its production. GCL International's accredited scope for GRS includes among other things content of recycled fibers in textile products and the content of recycled plastic in plastic products.</p></div>
<b>Eco-Friendly Fire Safety</b>	<p><b>Innovative Protection Without Harmful Additives</b></p> <p>Traditionally, flame retardants like phosphates and minerals are added to products to improve fire resistance. However, phosphates and minerals ending up in the environment will cause harmful effects, including causing eutrophication, which can lead to toxic algal blooms and reduced oxygen in water bodies, endangering aquatic ecosystems. Phosphates and minerals can also disrupt soil nutrient balance, harming crops and wildlife, and may degrade into even more dangerous compounds.</p> <p>BAUX Acoustic X-FELT offers outstanding fire resistance without the need for harmful additives, maintaining the product's eco-friendly profile. By using high-quality, ultra-fine polyester fibers and a meticulous fiber blend composition, X-FELT removes key fire enablers—oxygen access and fuel—delivering advanced fire safety alongside a commitment to environmental health.</p>

## Product lifetime over? We'll take it back.



We approach sustainability in everything we think and everything we do, every day. This commitment does not end even when the acoustic products have reached the end of their useful life. That's why we make it easy for you to have a positive impact on the environment while upgrading your space at the same time. Our Circle will support you all the way.



# Certificates and Standards

**Production:** Production locations: Raw Material: Europe, Finishing: Germany and Sweden

**Fire\* & Standards:** Classification: **Core Material:**  
EN – 12823 & EN ISO 11925-2: B-s1.d0 all colours and thicknesses certified  
**Top Material:**  
EN – 12823 & EN ISO 11925-2: B-s1.d0 all colours and thicknesses certified  
ASTM – E84-18: Class A, all colours certified

Extinguishing media: Water, carbon dioxide, foam or dry chemicals

\*In free standing/free hanging configuration, with a distance of at least 80 mm, to other plane building materials, butted joints permissible.

**Emissions:** Regulation/protocol (VOC Test Report Indoor Air Comfort GOLD)

French VOC Regulation:



AgBB/ABG:

Pass

Belgian Regulation:

Pass

Indoor Air Comfort GOLD®:

Pass

**Collaborations  
& Supplier  
Certificate:**

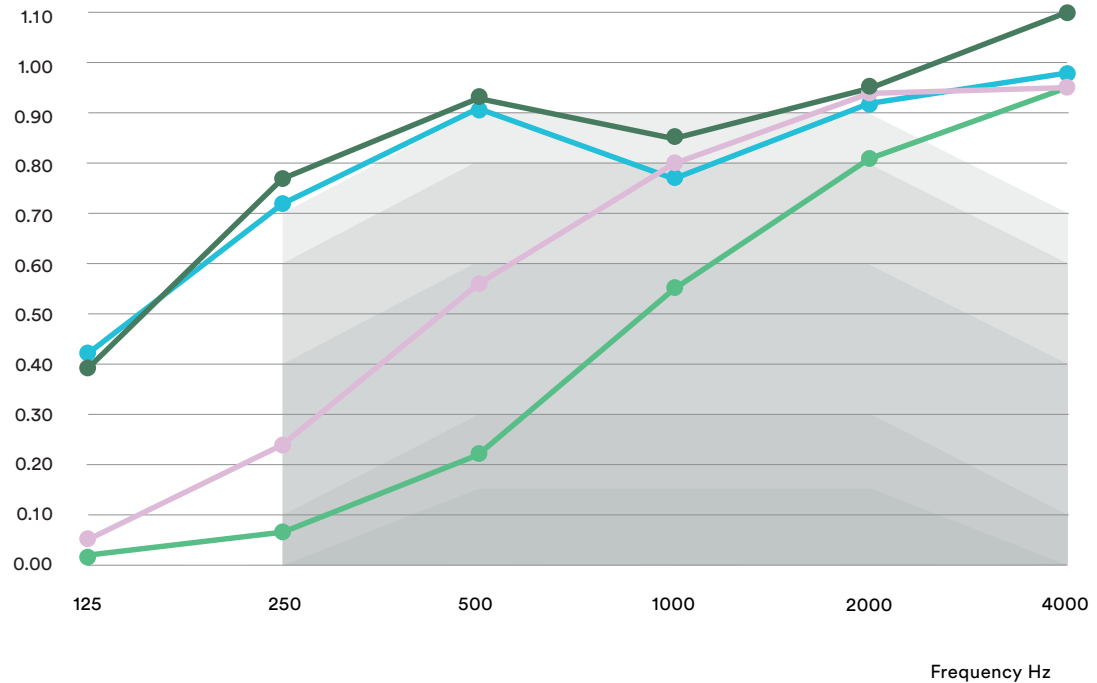


EPD Available for Top Materials.  
All Core Materials will be ready mid 2025.



# Acoustic Performance

Absorption Coefficient\*



\*An absorption coefficient is one of the key efficiency markers for acoustic materials, showing how much sound is absorbed at different frequencies. In the absorption spectrum, 0 indicates perfect reflection, and 1 indicates perfect absorption. Which one is ideal? It really depends on the kind of acoustic landscape you are aiming to build. While some spaces require maximum tranquility, in others, a bit more bustle and ambience may be desired. Our assortment addresses a range of absorption needs to help you achieve your goals.

	Installation	$\alpha_w$	NRC	SAA	Class
●	12 mm panel or tile without air slot	0.25	0.40	0.41	E
●	12 mm panel or tile + 200 mm slot	0.90	0.85	0.85	A
●	25 mm panel or tile without air slot	0.55	0.65	0.63	D
●	25 mm panel or tile + 200 mm slot	0.95	0.90	0.88	A

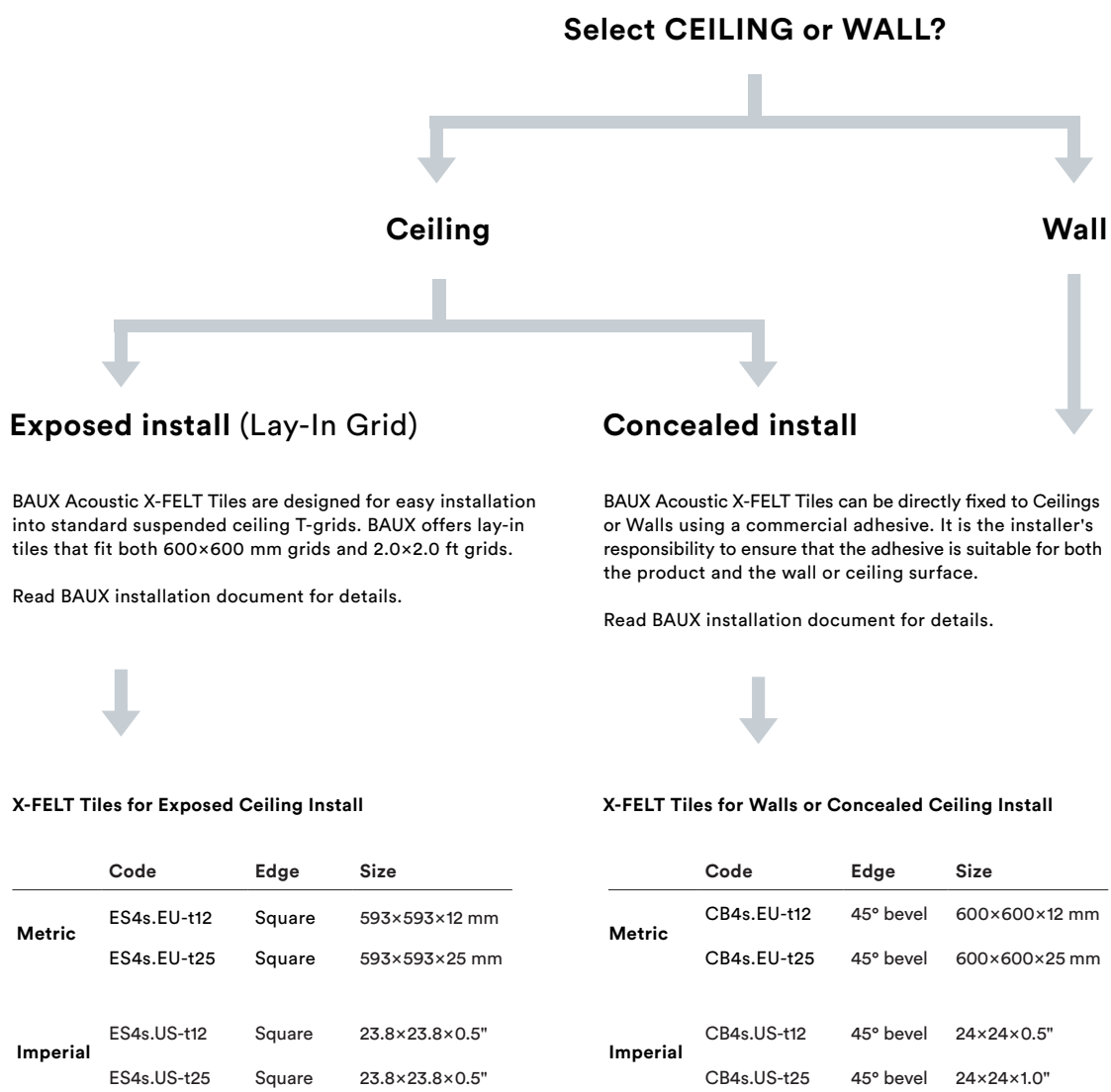
# Physical Appearance and Performance

<b>Physical Appearance &amp; Performance:</b>	Appearance:	Interior walls and ceilings	Thermal Resistance 10°C, DIN EN 12667	t12mm: 0.34 m² K/W t25mm: 0.76 m² K/W
	Colours:	Nine different colours 3 mono and 6 duo	Light reflection Standard illuminant D65, BS 8493	Mono Chalk Grey: 51.7 % Mono Granite Grey 24.1% Mono Ash Black 3%
	Odour:	None	Gloss level GU DIN EN ISO 2813	Mono Chalk Grey: 1.3 Mono Granite Grey 1.2 Mono Ash Black 0.7
	Solubility in water:	None	Colour fastness to artificial light DIN EN ISO 105-B02	t12 mm: 854 Pa s/m² t25 mm: 489 Pa s/m²
	Density:	167 kg/m³ or 2.0 kg/m³ 10.4 lbs/ft³	Specific flow resistance DIN EN ISO 9053-1	t12 mm: 71.1 kPa s/m² t25 mm: 19.5 kPa s/m²
	Dust:	No measurable particle attraction	Length-related flow resistance DIN EN ISO 9053-1	Inert to fungal and bacteria growth
	Recycled Content:	10–30 %	Resistance against fungi & bacteria DIN EN ISO—procedures A & C	t12 mm: 9 N t25 mm: 11 N
	Harmful additives:	None. Fire resistance has been achieved without adding any extra treatment	Bending Stiffness <sup>1)</sup> force at deflection 10 mm DIN EN ISO 178	t12 mm: 214 N t25 mm: 45 N
			Ball indentation hardness surface <sup>2)</sup> force at indentation depth 5 mm DIN EN ISO 2039-1	t12 mm: 167 N t25 mm: 45 N
	Stability and reactivity:	Stable, Avoid Humid Conditions	Ball indentation hardness edge <sup>2)</sup> force at indentation depth 5 mm DIN EN ISO 2039-1	t12 mm: 167 N t25 mm: 41 N
			Abrasion Resistance	UNE-EN 14465+A1: Class A ISO 12947-2 / AC: >50.000 Rubs

1) Support span 450 mm width pressure fin: 50 mm sample size 75×500 mm tested speed: 100 mm/min

2) Ball diameter: 20 mm sample size: 100×100 mm ball position: Surface centered and surface edge test speed: 100 mm/min

# Tiles – Specification Guide





# Specification Codes

To ensure the correct product specification, please refer to the item code structure below. This guide will help you accurately identify and select the appropriate product type based on the required specifications.

Item Code Structure		Example: XFP-E1204C-01
Family	XF = X-FELT	XF = X-FELT
Application	P = Panels T = Tiles	P = Panel
Market	E = Europe U = USA	E = Europe Dim
Thickness	12 = 12 mm 25 = 25 mm	12 = 12 mm thickness
Pattern	01 = Plain 02 = Straight Widestripe 03 = Ripple (L) Widestripe 04 = Ripple (R) Widestripe 05 = Wave Widestripe 06 = Flow Widestripe 07 = Straight Pinstripe 08 = Ripple (L) Pinstripe 09 = Ripple (R) Pinstripe 10 = Wave Pinstripe 11 = Flow Pinstripe	04 = Ripple (R) Widestripe
Edge	C = Concealed with Bevelled E = Exposed with square edge (for ceiling inlay)	C = Concealed with Bevelled Edge
Colour	01 = Mono Chalk Grey 02 = Mono Granite Grey 03 = Mono Ash Black 04 = Duo Sand & Grey 05 = Duo Brown Sand & Black 06 = Duo Grass & Grey 07 = Duo Sky Blue & Black 08 = Duo Deep Waters & Grey 09 = Duo Red Clay & Grey	01 = Mono Chalk Grey



[www.baux.com](http://www.baux.com)